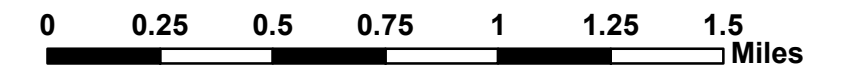


MARTIN TOWNSHIP

ALLEGAN COUNTY, MICHIGAN

OFFICIAL FUTURE LAND USE MAP

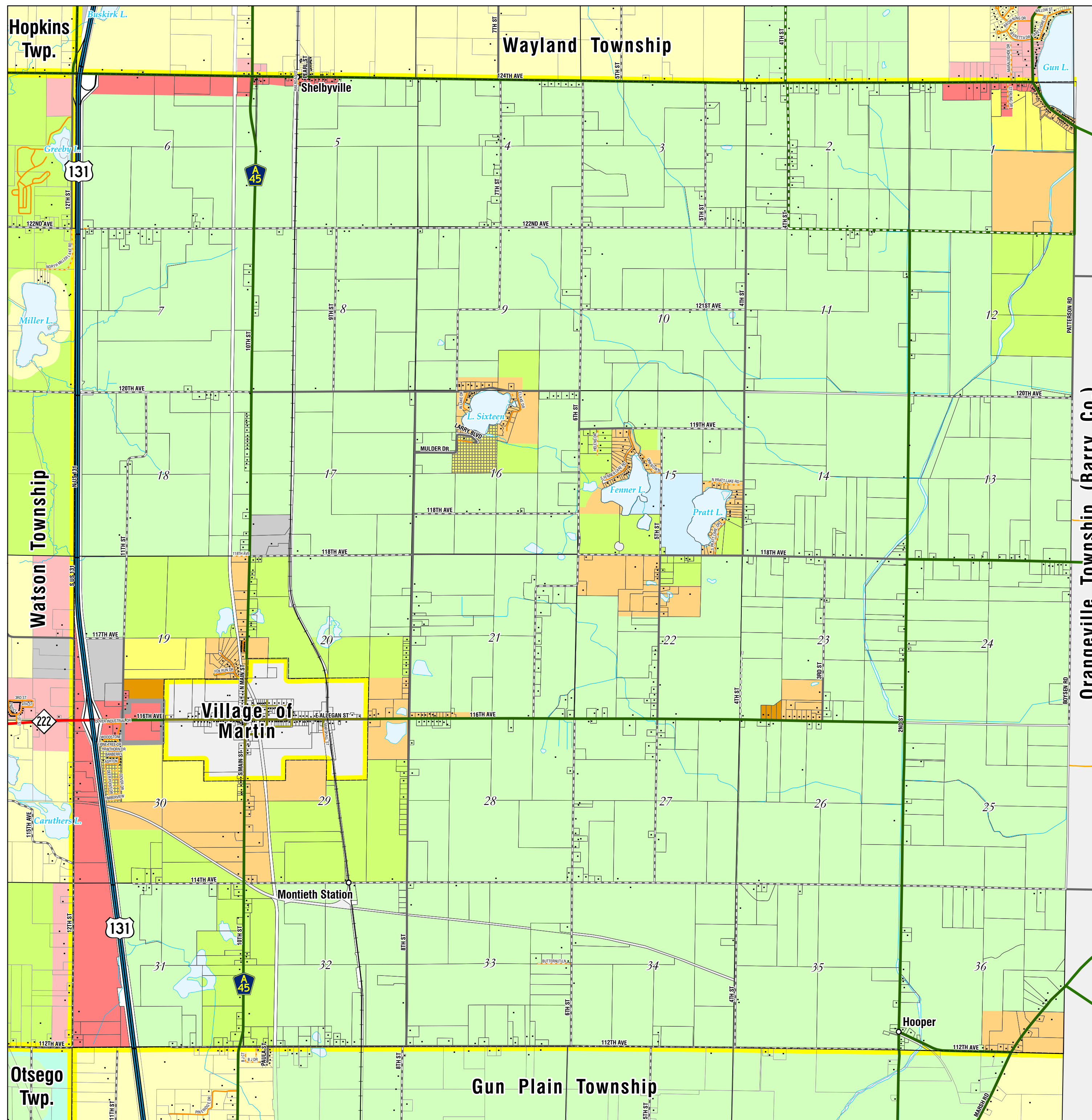
AS AMENDED THROUGH JANUARY 10, 2006



1:27,000
1 INCH = 2,250 FEET

MAP LEGEND

- Roads-Ramps
- PLANNED UNIT DEVELOPMENT (PUD)
- FUTURE LAND USE: MARTIN TOWNSHIP**
- AG-RE - AGRICULTURE - REAL ESTATE
- C - COMMERCIAL
- CONS - CONSERVATION
- HDR - HIGH-DENSITY RESIDENTIAL
- I - INDUSTRIAL
- MHD - MANUFACTURED HOUSING DISTRICT
- MDR - MEDIUM-DENSITY RESIDENTIAL
- NU - NEW URBANISM
- ROW - RIGHT-OF-WAY
- RR - RURAL RESIDENTIAL
- GENERALIZED FUTURE LAND USE FOR SURROUNDING AREAS**
- Roads-Ramps
- OPEN SPACE
- RESIDENTIAL
- RIGHT-OF-WAY
- RURAL
- WATER
- AGRICULTURAL
- COMMERCIAL
- GOVERNMENT
- INDUSTRIAL
- MIXED



ALLEGAN COUNTY LAND INFORMATION SERVICES ASSUMES NO LIABILITY FOR RESULTS OR CONCLUSIONS DRAWN FROM THE USE OF THIS DATA. MAP CREATED FEBRUARY 26, 2013